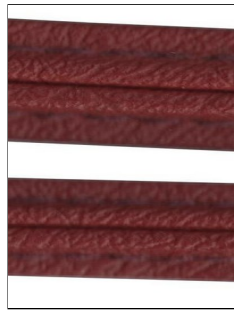
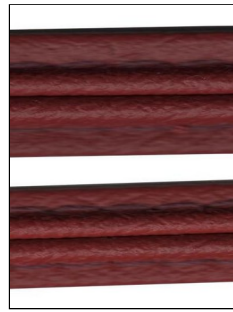




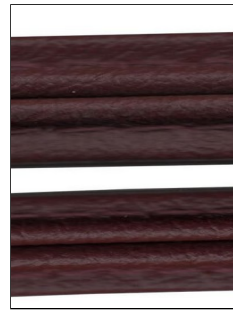
MC01: Poppy



MC02: New Mat.



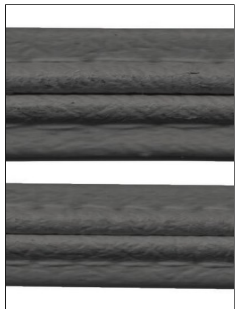
MC03: Matador



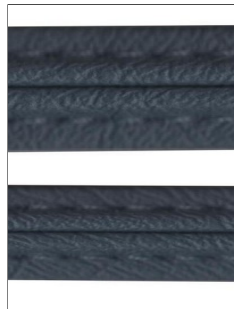
MC04: Mulberry



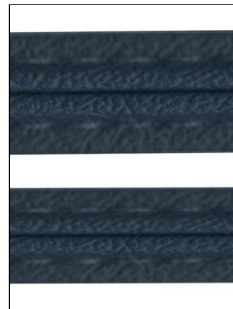
MC05: Saville Gr.



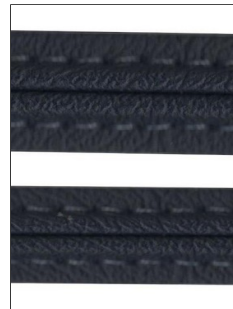
MC06: French Bl.



MC07: Jag Pale Bl.



MC08: Triumph Bl.



MC09: Midnight



MC10: Isis Blue



MC11: Suede Gn.



MC12: Apple Gn.



MC13: Brit. R. Gn.



MC14: Cream



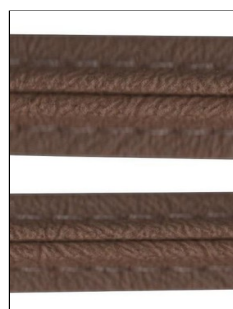
MC15: Jag Mag



MC16: Doeskin



MC17: Biscuit



MC18: Cinnamon



MC19: County Tan



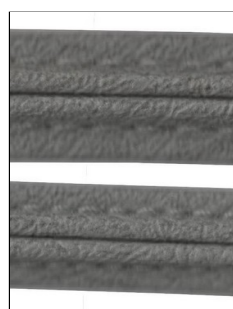
MC20: Antique Br.



MC21: Black



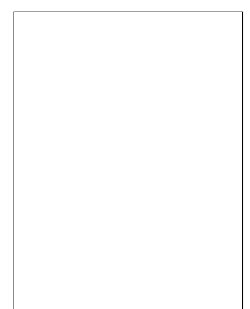
MC22: White



MC23: Old Grey



MC24: Old Beige



MC25:

## **About**

Established 1976  
Trade & Public Material Sales  
Comprehensive range  
Superlative customer service

## **Products**

Leather hides  
Vinyl  
Carpet  
Vinide  
Hooding  
Headlining  
Seating cloth  
Rubber matting  
Door & Boot Seals  
Fasteners  
Thread  
Adhesives  
Sundries  
More...

## **Address**

Martrim Ltd  
Unit 10 Millbuck Way  
Springvale Industrial Estate  
Sandbach, Cheshire  
CW11 3HT  
United Kingdom

## **Contact**

+44 (0) 1270 767771  
trim@martrim.co.uk

## **Josh**

+44 (0) 7771 984668  
josh@martrim.co.uk

Company no: 3549186  
UK VAT no: 453501277

## **Developer**

eNomadic.com

## **Version**

4

